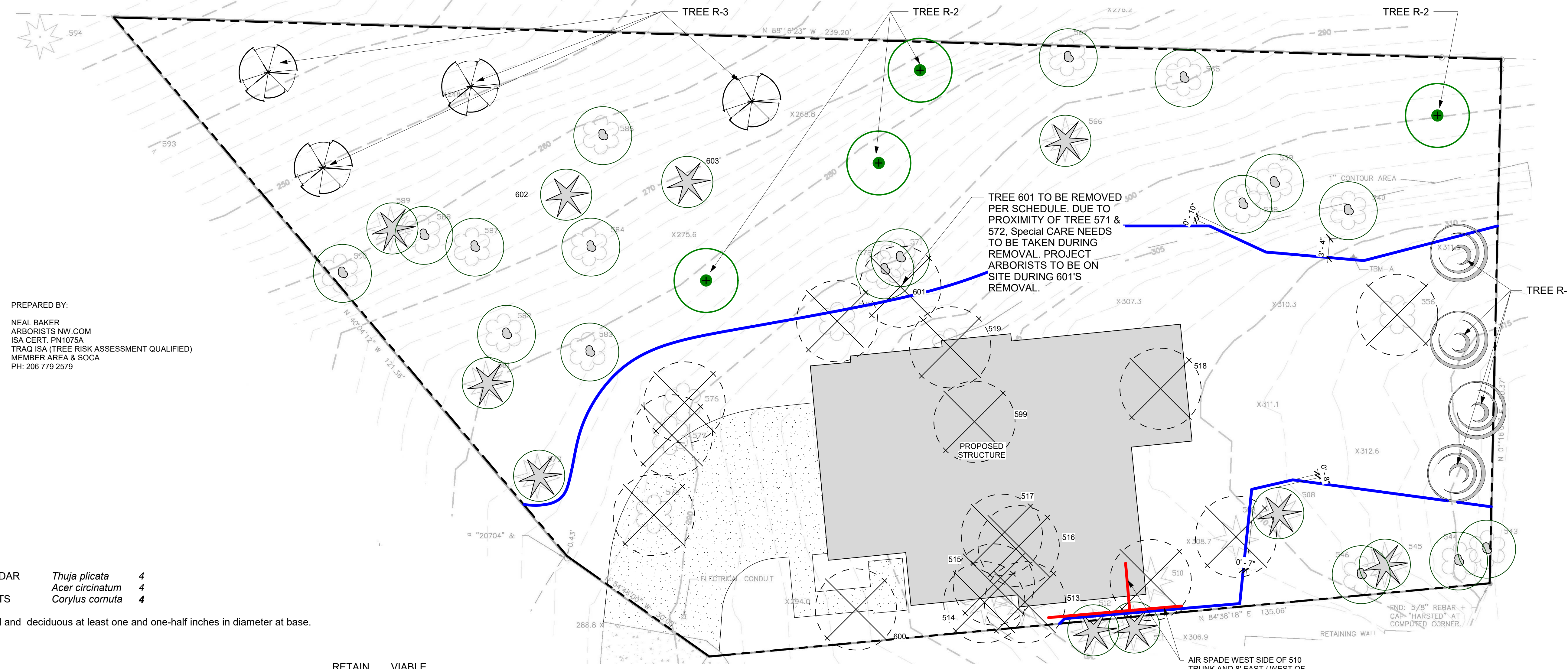


No.	Description	Date



PREPARED BY:
 NEAL BAKER
 ARBORISTS NW.COM
 ISA CERT. PN1075A
 TRAQ ISA (TREE RISK ASSESSMENT QUALIFIED)
 MEMBER AREA & SOCA
 PH: 206 779 2579

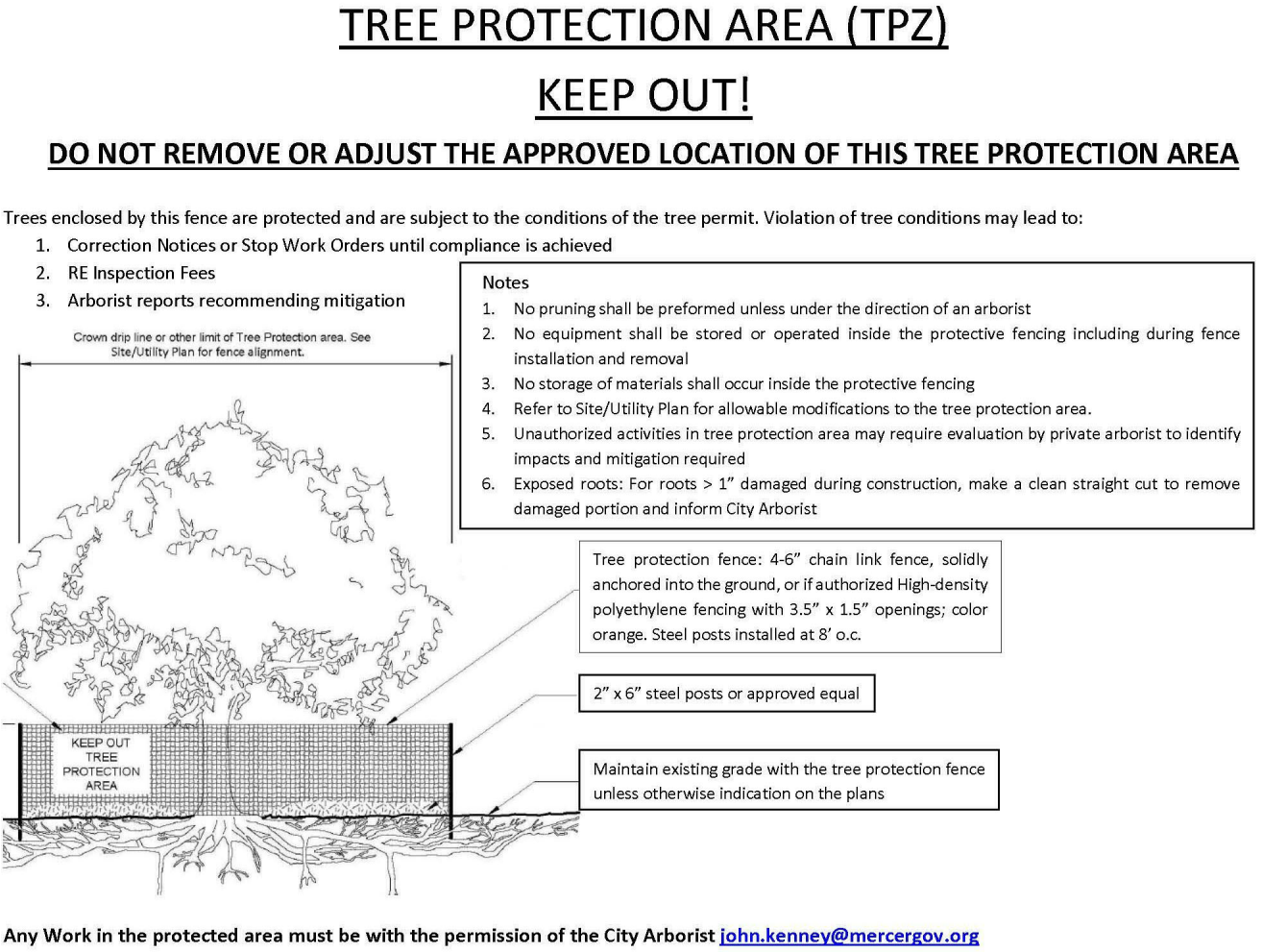
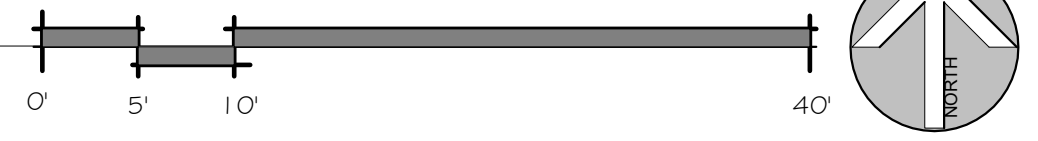
REPLANTING PLAN:

- R-1 WESTERN RED CEDAR *Thuja plicata* 4
- R-2 VINE MAPLE *Acer circinatum* 4
- R-3 BEAKED HAZELNUTS *Corylus cornuta* 4

Conifers at least six feet tall and deciduous at least one and one-half inches in diameter at base.

TREE #	TREE TYPE	DBH	DRIPLINE	CONDITION	RETAIN OR REMOVE	VIABLE OR NOT VIABLE	NOTES
508	DOUGLAS FIR (Pseudotsuga menziesii)	30"	40'	FAIR/GOOD	RETAIN	VIABLE	SEE ARBORIST COVER DESCRIBING RESULTS OF ISA LEVEL 3 INSPECTION. DISTORTED WITH BUTT SWELL DISTORTED
509	DOUGLAS FIR (Pseudotsuga menziesii)	16"	24'	FAIR/GOOD	REMOVE	VIABLE	
510	DOUGLAS FIR (Pseudotsuga menziesii)	36.5"	45'	POOR	RETAIN	NOT VIABLE	
511	DOUGLAS FIR (Pseudotsuga menziesii)	28"	35'	FAIR/GOOD	RETAIN	VIABLE	
512	DOUGLAS FIR (Pseudotsuga menziesii)	36"	50'	FAIR/GOOD	RETAIN	VIABLE	
513	DOUGLAS FIR (Pseudotsuga menziesii)	8"	15'	FAIR/GOOD	REMOVE	VIABLE	
514	BLACK PINE (Pinus thunbergia)	8"	15'	FAIR/GOOD	REMOVE	VIABLE	
515	DOUGLAS FIR (Pseudotsuga menziesii)	8"	15'	FAIR/GOOD	REMOVE	VIABLE	
516	BIG LEAF MAPLE (Acer macrophyllum)	12"	20'	FAIR/GOOD	REMOVE	VIABLE	
517	BIG LEAF MAPLE (Acer macrophyllum)	18"	28'	FAIR/GOOD	REMOVE	VIABLE	
518	BIG LEAF MAPLE (Acer macrophyllum)	30"	60'	EXC. LEAN	REMOVE	NOT VIABLE	
519	BIG LEAF MAPLE (Acer macrophyllum)	36"	40'	FAIR/GOOD	REMOVE	NOT VIABLE	
538	BIG LEAF MAPLE (Acer macrophyllum)	12"	20'	FAIR/GOOD	RETAIN	VIABLE	
539	BIG LEAF MAPLE (Acer macrophyllum)	18"	28'	FAIR/GOOD	RETAIN	VIABLE	
540	BIG LEAF MAPLE (Acer macrophyllum)	7"	15'	FAIR/GOOD	RETAIN	VIABLE	
543	RED ALDER (Alnus rubra)	12"	16'	POOR	RETAIN	NOT VIABLE	
544	BIG LEAF MAPLE (Acer macrophyllum)	8"	15'	FAIR/GOOD	RETAIN	VIABLE	
545	DOUGLAS FIR (Pseudotsuga menziesii)	28"	45'	FAIR/GOOD	RETAIN	VIABLE	
546	MADRONA (Arbutus menziesii)	12"	20'	FAIR/GOOD	RETAIN	VIABLE	
556	BIG LEAF MAPLE (Acer macrophyllum)	36"	48'	POOR	REMOVAL	NOT VIABLE	
565	BIG LEAF MAPLE (Acer macrophyllum)	14"	20'	FAIR/GOOD	RETAIN	VIABLE	
566	WESTERN RED CEDAR (Thuja plicata)	10"	18'	FAIR/GOOD	RETAIN	VIABLE	
567	BIG LEAF MAPLE (Acer macrophyllum)	36"	45'	FAIR/GOOD	RETAIN	VIABLE	
571	BIG LEAF MAPLE (Acer macrophyllum)	14"	20'	FAIR/GOOD	RETAIN	VIABLE	
572	BIG LEAF MAPLE (Acer macrophyllum)	8"	13'	FAIR/GOOD	RETAIN	VIABLE	
573	BIG LEAF MAPLE (Acer macrophyllum)	8"	30'	FAIR/GOOD	REMOVE	VIABLE	
576	BIG LEAF MAPLE (Acer macrophyllum)	11"	15'	FAIR/GOOD	REMOVE	VIABLE	
577	BIG LEAF MAPLE (Acer macrophyllum)	6"	10'	FAIR/GOOD	REMOVE	VIABLE	
578	BIG LEAF MAPLE (Acer macrophyllum)	16.7"	25'	FAIR/GOOD	REMOVE	VIABLE	
579	DOUGLAS FIR (Pseudotsuga menziesii)	18"	28'	FAIR/GOOD	RETAIN	VIABLE	
581	WESTERN RED CEDAR (Thuja plicata)	36"	45'	FAIR/GOOD	RETAIN	VIABLE	
582	BIG LEAF MAPLE (Acer macrophyllum)	9"	15'	FAIR/GOOD	RETAIN	VIABLE	
583	BIG LEAF MAPLE (Acer macrophyllum)	12"	20'	FAIR/GOOD	RETAIN	VIABLE	
584	BIG LEAF MAPLE (Acer macrophyllum)	30"	40'	FAIR/GOOD	RETAIN	VIABLE	
586	BIG LEAF MAPLE (Acer macrophyllum)	28.4"	25'	FAIR/GOOD	RETAIN	VIABLE	
587	BIG LEAF MAPLE (Acer macrophyllum)	12"	17'	FAIR/GOOD	RETAIN	VIABLE	
588	BIG LEAF MAPLE (Acer macrophyllum)	27.7"	32'	FAIR/GOOD	RETAIN	VIABLE	
589	WESTERN RED CEDAR (Thuja plicata)	6"	10'	FAIR/GOOD	RETAIN	VIABLE	
590	BIG LEAF MAPLE (Acer macrophyllum)	19.7"	32'	FAIR/GOOD	RETAIN	VIABLE	
593	WESTERN RED CEDAR (Thuja plicata)	36"	48'	FAIR/GOOD	RETAIN	VIABLE	
594	WESTERN RED CEDAR (Thuja plicata)	36"	48'	FAIR/GOOD	RETAIN	VIABLE	
599	NORWAY SPRUCE (Picea abies)	11"	14'	GOOD	REMOVE	VIABLE	
600	PORTUGUESE LAUREL (Prunus lusitanica)	10.6"	14'	FAIR/GOOD	RETAIN	VIABLE	
601	BIG LEAF MAPLE (Acer macrophyllum)	28"	32'	DEAD	REMOVE	NOT VIABLE	
602	DOUGLAS FIR (Pseudotsuga menziesii)	22"	32'	DEAD	RETAIN	NOT VIABLE	
603	WESTERN RED CEDAR (Thuja plicata)	30"	STUB	DEAD	RETAIN	NOT VIABLE	

ARBORISTS SITE PLAN
 1" = 10'-0"



	TREE DRIP LINE
	EVERGREEN TREE
	DECIDUOUS TREE
	TREE TO BE REMOVED
	TREE PROTECTION FENCING
	NEW TREE

CHEN RESIDENCE

50xx W MERCER WAY, MERCER ISLAND 98040

CHEN RESIDENCE

ARBORIST TREE PLAN

Project number	
Date	
Drawn by	CW
Checked by	NB

A102

Scale As indicated